

LIBRARY PARK

Mystic & Noank Library



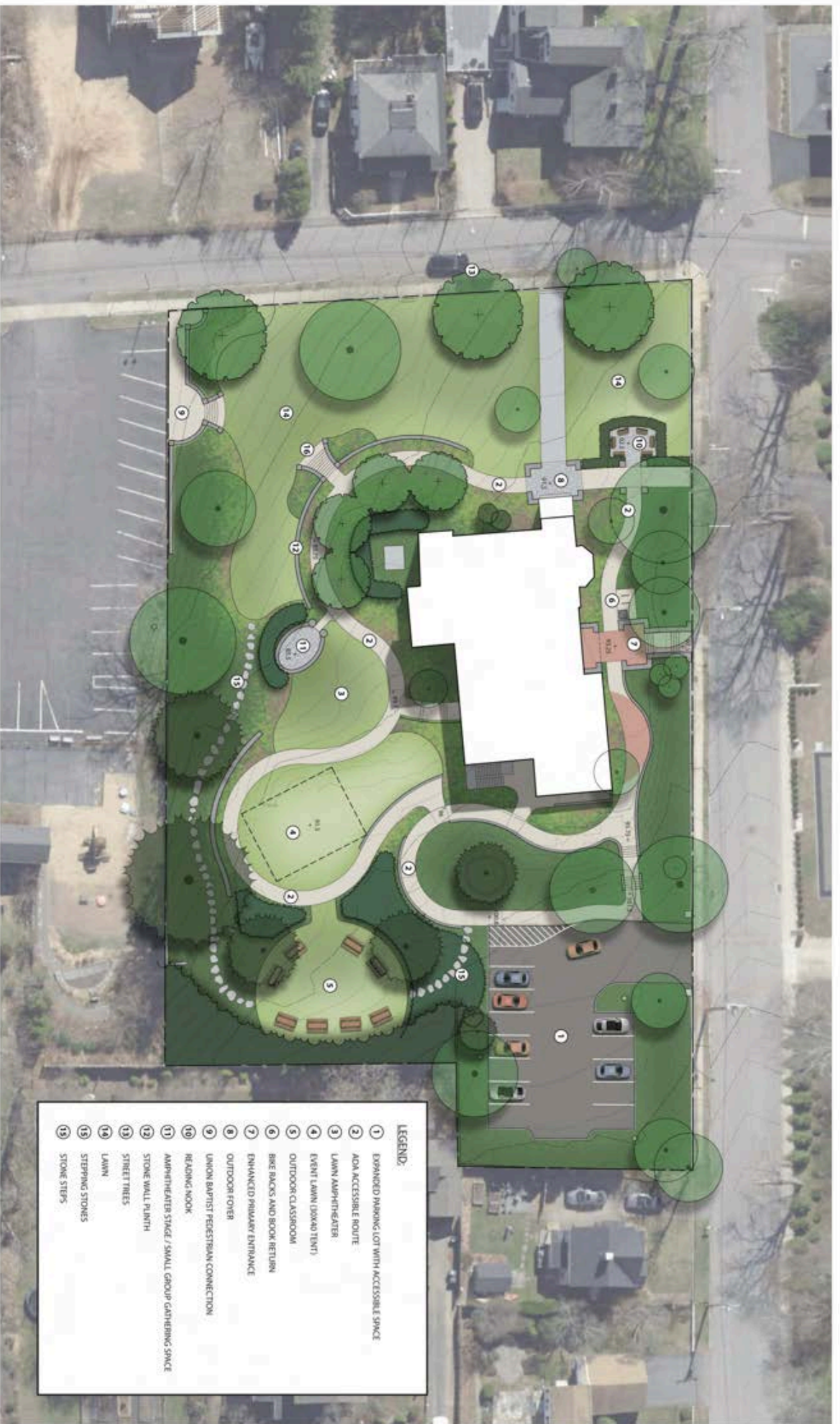
SINCE 1893

LIBRARY PARK



The library plans to transform the grounds surrounding this beautiful 1893 building into an accessible park. This new park will play an integral part in achieving the library's mission by expanding the library's ability to meet the community's needs for programs and other library programs with an enhanced outdoor campus. Capitalizing on thirty feet of grade change, new walkways will extend throughout the park to create accessible paths connecting various new and expanded natural outdoor spaces.

The grounds reimagined will also create new social spaces for families and adults to meet and interact before or after visiting the library and when the library is closed, utilizing extended Wi-Fi throughout. This park will also educate visitors about environmental stewardship by showcasing green technology and featuring native plants. Library Park is designed not as separate entity from the library, but rather as an extension of the library's mission into outdoor space.



Mystic & Noank Library

Master Plan

May 17, 2023



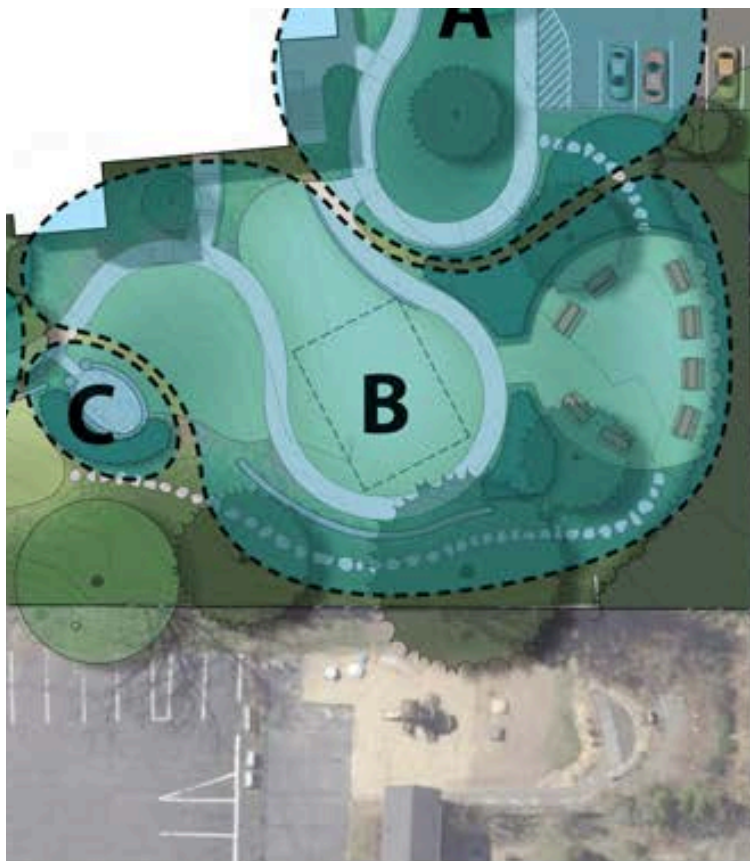
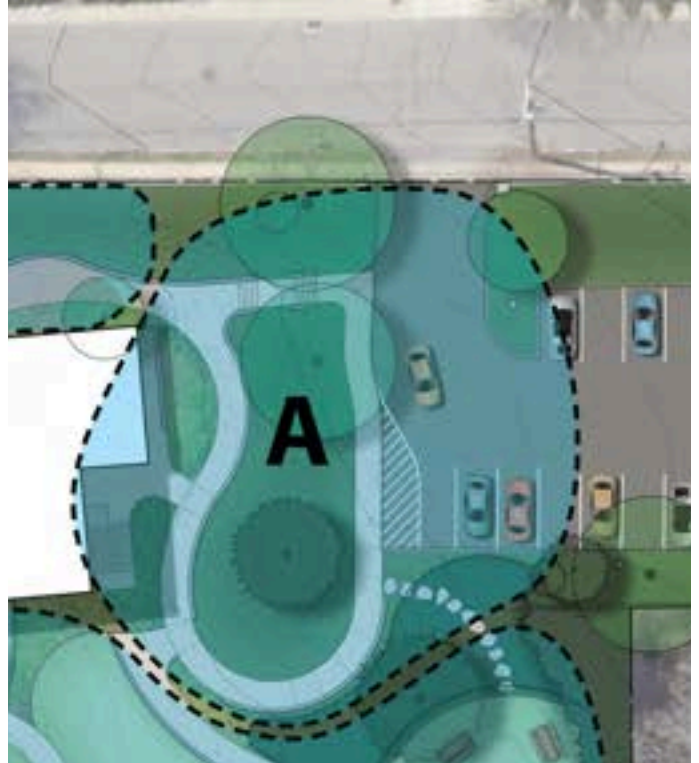
- LEGEND:**
- 1 EXPANDED PARKING LOT WITH ACCESSIBLE SPACE
 - 2 ADA ACCESSIBLE ROUTE
 - 3 LAWN AMPHITHEATER
 - 4 EVENT LAWN (DOKAO TENTS)
 - 5 OUTDOOR CLASSROOM
 - 6 BIKE RACKS AND BOOK RETURN
 - 7 ENHANCED PRIMARY ENTRANCE
 - 8 OUTDOOR Foyer
 - 9 UNION BAPTIST PEDESTRIAN CONNECTION
 - 10 READING NOOK
 - 11 AMPHITHEATER STAGE / SMALL GROUP GATHERING SPACE
 - 12 STONE WALL PLANTH
 - 13 STREET TREES
 - 14 LAWN
 - 15 STEPPING STONES
 - 16 STEPPING STONES
 - 17 STONE STEPS

SITE PLAN

BY KENT & FROST

AREA A

This area slightly expands the current parking lot but most importantly provides on-site accessible parking as well as a ramped-accessible path to the main entrance which continues to connect to the classroom spaces throughout the grounds.

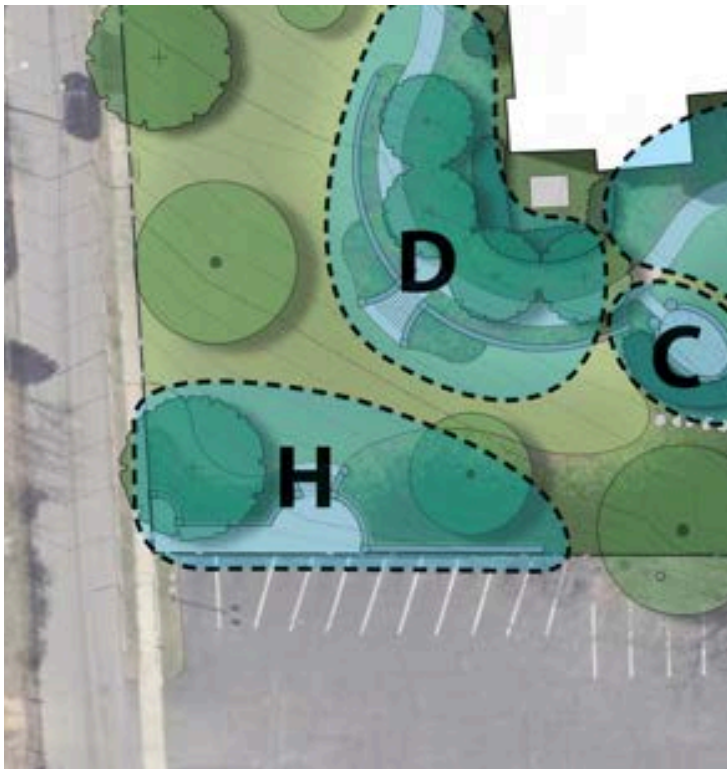
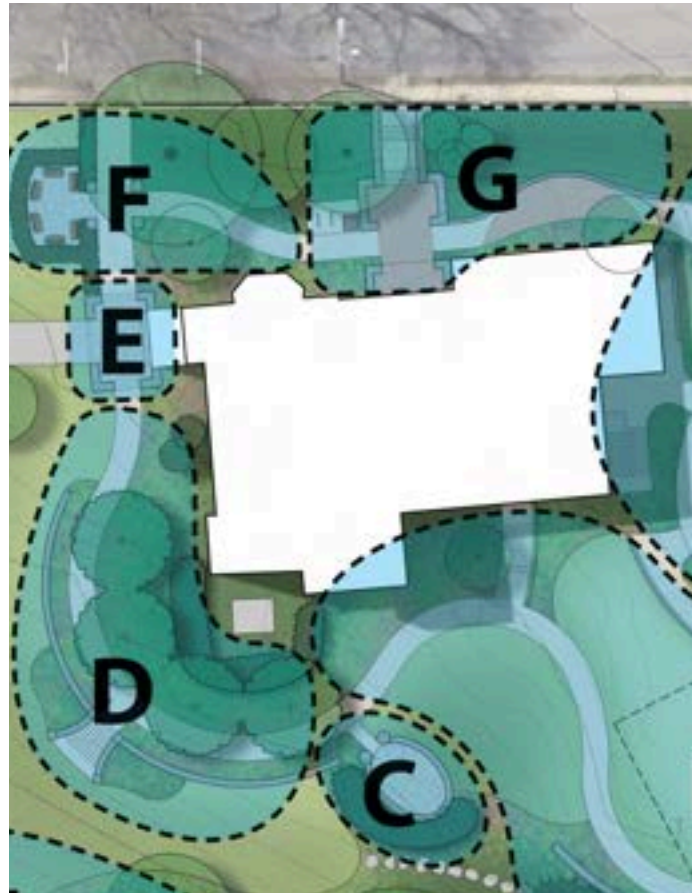


AREAS B & C

These areas take advantage of the existing topography to create a natural grassy amphitheater, library program space and two outdoor classroom spaces. Area B will have accessible tables for hands-on crafts and projects. This area will also feature raised bed learning gardens and a composting station, furthering education about the library's Green Initiative. Viewing to the natural amphitheater will be visible from the upper spaces providing access to those with limited mobility.

AREAS D, E, F & G

These areas continue the accessible path to an expanded plaza at the original entrance for program use, utilizing the existing covered building portico. The path continues to an existing area that is expanded with natural screening for small groups. Finally, the path connects to an enlarged exterior entry that celebrates the architecture of the building, interpreting that architecture in an open entry plaza and staircase.



AREA H

This area creates a connection to our church neighbor and will formalize the existing partnership between the library and church, providing overflow parking for library functions and access to beautiful grounds.





Mystic & Noank Library

Areas Plan

December 7, 2023

